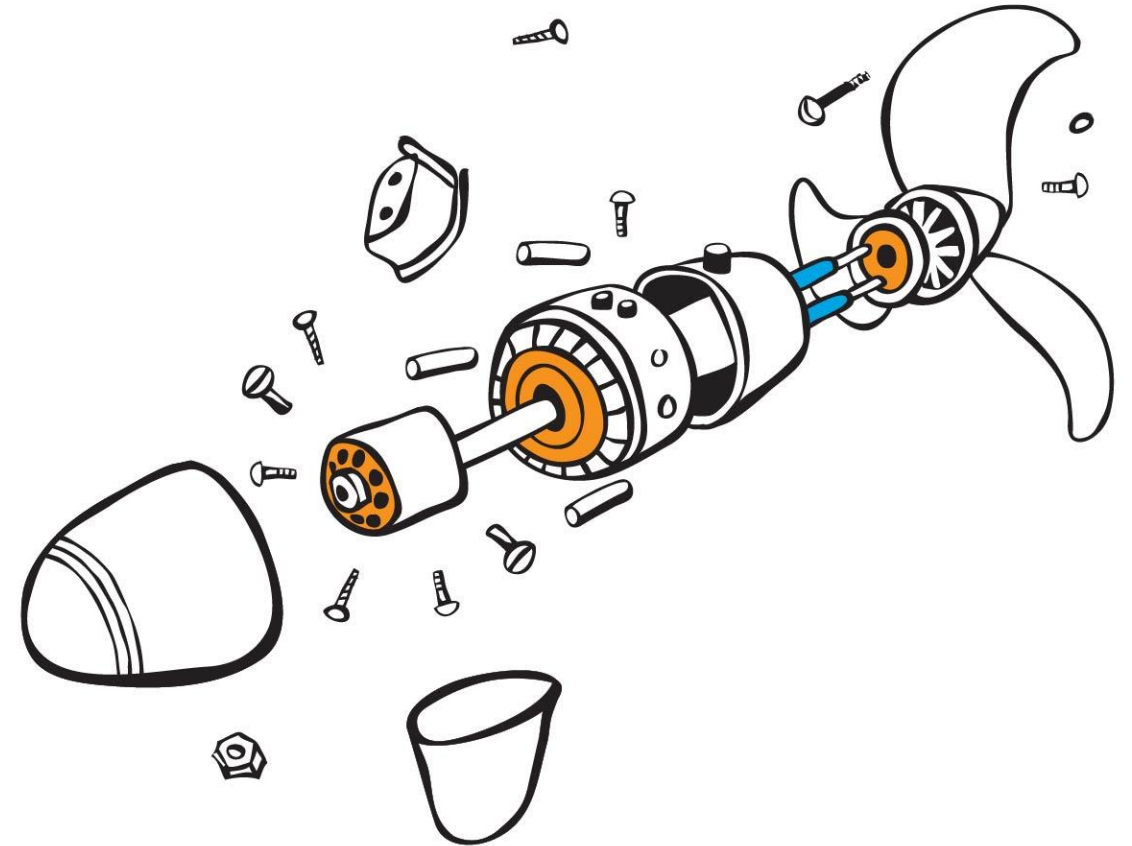


Engineering with a difference



Embedded systems & IoT Poland

Now you can tell your product to think for itself



Wrocław Headquarters
ul. Muchoborska 18, Gamma build.
Wrocław Technology Park

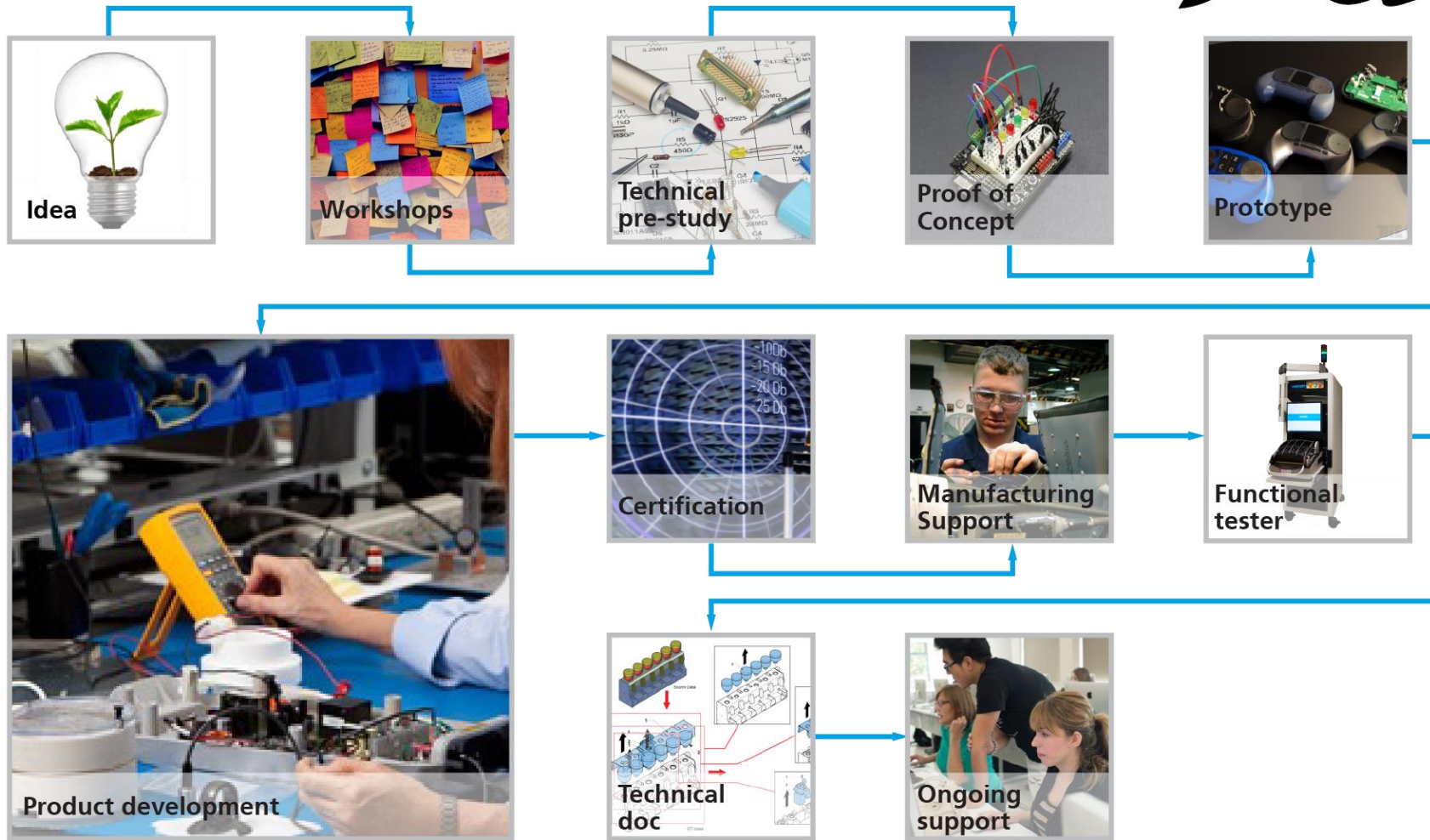


Poznań Office
ul. Szyperska 14
61-754 Poznań



>150 Engineers
10+ Hardware Engineers
130+ Software Engineers
4+ Mechanics Engineers
7+ Project Managers
3 Technical Writers

Etteplan's holistic approach



We offer a wide range of services, from PoC, through prototypes, design, preparing for manufacturing, ICT testers, technical documentation and ongoing support.

Embedded & IoT services



Embedded Hardware & Software

- 90 C/C++ engineers
- 12 hardware designers
- 4 mechanical designers



Testing Solutions

- R&D testing, custom testers,
- FCT testers for manufacturing
- End of Line testers
- Mechanical testers



Internet of Things

- sensors devices
- wireless: LoRa, Zigbee, BT, Thread, Sigfox
Z-Wave, 6LoWPAN, NB-IoT, wmbus, Wi-Fi, BLE

Test Systems



Our clients at the end of product R&D, needed a Functional Tester for production to verify each assembled unit. Etteplan Poland has a team of 15 engineers that develop such testers.



Testers thanks to SkyWats Software from Virinco can be integrated into the network to monitor the yield of the production in the real-time.

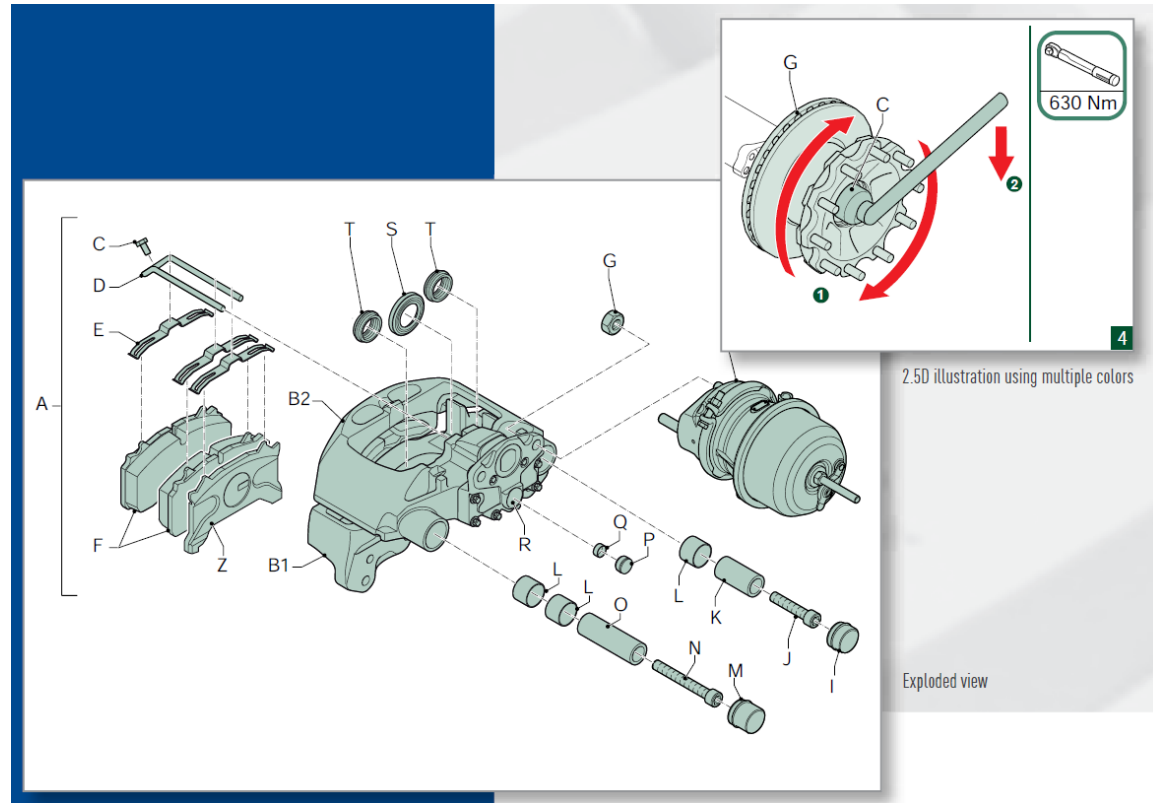
We are a **Gold Partner** of the **National Instruments**.



Interactive technical documentation



Improve your competitiveness and lower your downtime costs for production lines.



- Equipment installation instruction
- Usage instructions for machine operator
- Service & Maintenance instructions
- Electronic spare parts catalogue
- Up to 60% savings in the creation, maintenance and distribution of catalogs
- Up to 30% time savings on downtimes

Clients & Partners



Vehicle monitoring system with OBD interface



TomTom Poland was looking for a skilled hardware designers to develop the world's smallest OBDII tracking device.

Etteplan proposed to develop the product with all the miniaturization challenges.

That included:

- complex HW design including GSM/UMTS connectivity, GPS and multiprotocol OBD interface
- RF antenna design and tuning
- complex PCB layout design
- test software development
- close cooperation with 3rd party suppliers and manufacturer
- prototypes production, assembly, RF and environmental testing

There were 3 senior engineers involved in the project.

The team delivered the desired product according to the customer's specific requirements.

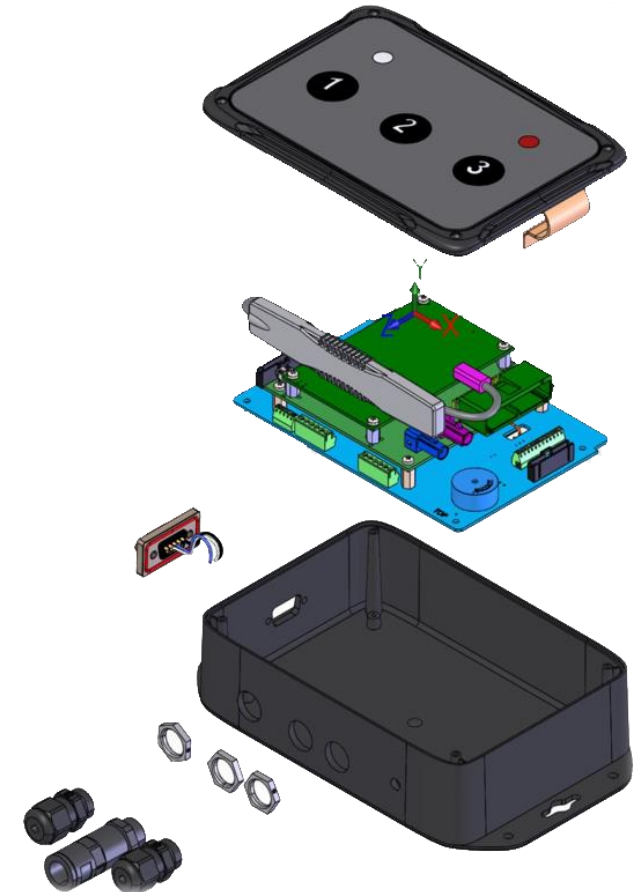
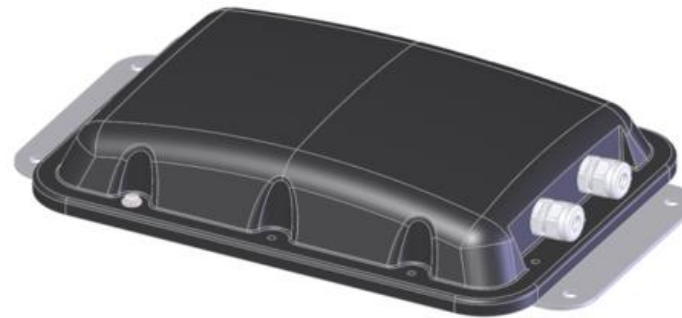


IoT case

Garbage truck monitoring system



- System consist of two devices – so called “Observation panel” (in vehicle cab) and outdoor reader;
- Solution mechanical design;
- Solution HW design (schematics and layout) including L Commercial satellite modem;
- Prototypes production and assembly, testing;
- Cooperation with 3rd party suppliers (VAC housing production, metal base production, gaskets production, components selection etc.)
- 3 Engineers involved in the project

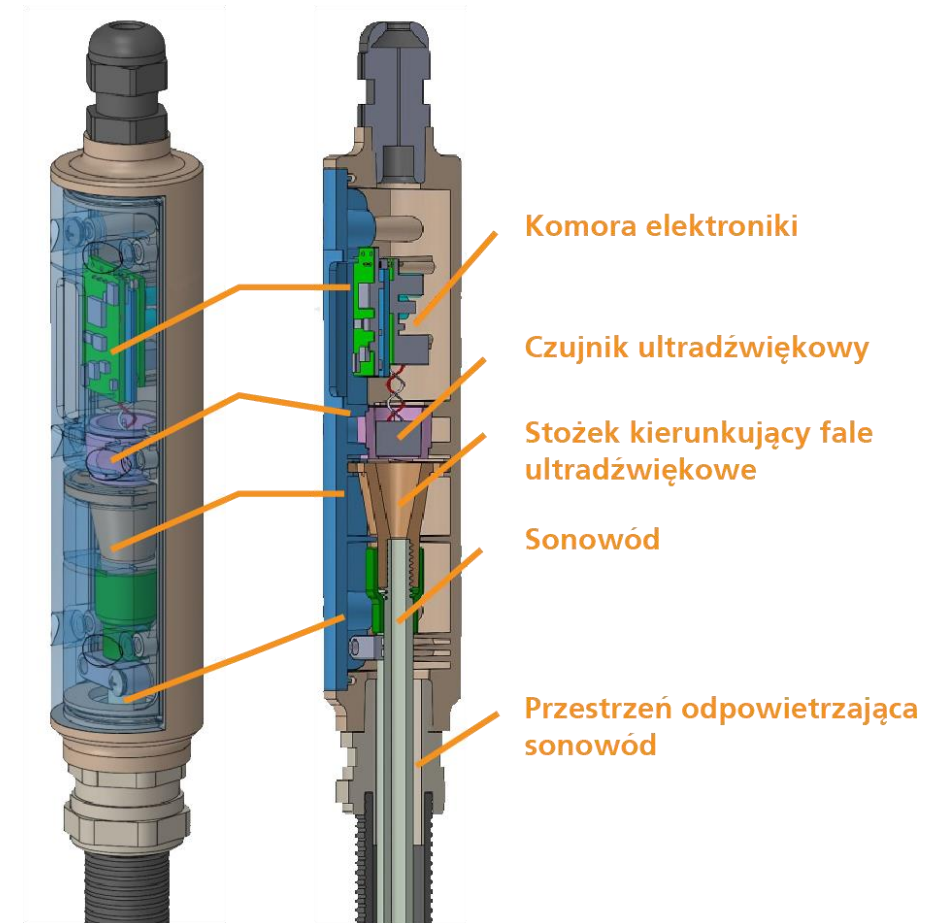


IoT case

Fuel tank level sensor



- Target of project: design IP67 housing for fuel level sensor;
- Commercial components selection (sensor & transducer, cabling, glands, gasket, resin etc.);
- Prototypes ordering including 3D models printing;
- Prototypes assembling;
- Device is a part of bigger automotive system
- Used for tracking and monitoring of big trucks
- 3 Engineers involved in the project



Customer case - Merivaara



Merivaara had a hard time to find a company to design a medical-grade touch panel device to control various devices in hospitals.

The major challenge in the project was the User Interface design that had to be modern yet still simple and functional.

Etteplan designed the User Interface, Hardware, Enclosure, Software and certified the product.



Merimote™ is a multifunctional remote control for Merivaara operating room equipment. With its intuitive touch screen Merimote™ guides the user to get full advantage of the working environment. Merimote also gives access to more advanced product support.

"We noticed that similar products on the market were a bit old fashioned and quite difficult to use. The big challenge with Merimote was to visualize this totally new kind of product and make it easy to use. Etteplan pulled through this demanding development project where the information and resources were geographically distributed.", Jyrki Nieminen, R&D Director at Merivaara.

SkyWave

an ORBCOMM™ Company

ORBCOMM Inc. is a leading global provider of M2M communication solutions and operates the only commercial satellite network dedicated to M2M.



Bluetooth Adapter provides the Bluetooth connectivity between the IDP-680 satellite terminal and mobile applications. It supports both Bluetooth and Bluetooth LE.



1-Wire I/O Expander delivers the additional I/O ports for the IDP-782 cost-effective, dual mode communication device.

“Our partnership with Etteplan has enabled us to react quickly to market opportunities while maintaining our commitments to in-house core development projects. Etteplan’s experienced team and excellent collaboration IT infrastructure have made the process efficient and painless.”

Phil Lafleur, Hardware Director at Skywave an Orbcomm company.

Smart BLE coffee cup



- Mechanics, Software, Hardware to deliver the energy harvesting from the heat of your coffee.
- Etteplan has also delivered ICT tester



**We specialise in extreme
technical details
so you don't have to.**

